



SIMPLE LIFE



SIMPLE LIFE



Shrewsbury Close, Middleton, M24

£1,250 PCM

Welcome to Simple Life's Shrewsbury Close homes. Middleton is ideally located close to the main motorway networks, the M62, M60, the main Manchester Outer Ring Road and the A627(M). Shrewsbury Close has excellent bus and rail networks, and also sits on the Metrolink line with Mill Hills station located 2.3 miles away.

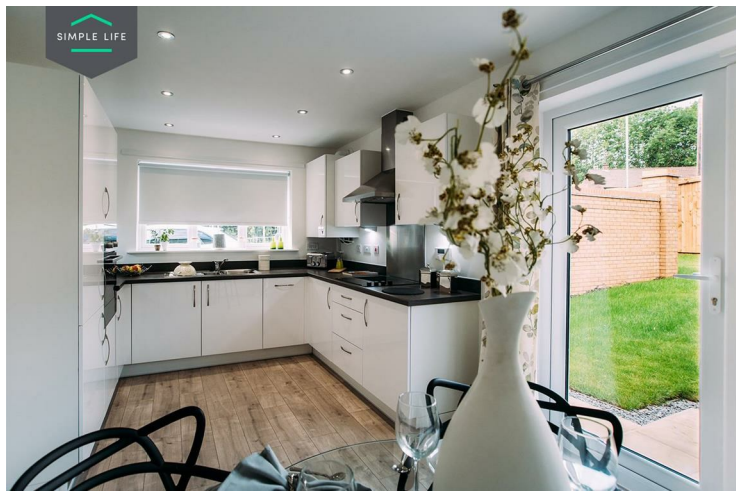
The welcoming central hallway of the Grantham sits in between the living room and the kitchen. A house designed with you in mind, the spacious lounge provides the perfect area to relax, whilst the dining/kitchen area provides a great place to spend time and entertain with its French windows opening on to the garden. A WC is conveniently situated off the hallway, completing the downstairs.

Upstairs, the house has a large master bedroom with fitted, mirrored wardrobes, and a further two bedrooms. A stylish family bathroom with a separate bath and shower provides the best of both worlds, whilst a store room on the landing provides a space to store bits and pieces.

The site benefits from excellent local amenities and a good range of local schools, including the nearby St Anne's Academy.

Deposit: £1,440
Tenancy Length: 12 Months
Council Tax Band: B
Available 4th September 2023





Key Features

- Private driveway
- Fitted wardrobes to master bedroom
- Fridge freezer
- Oven and hob
- Dark ash style worktops
- Security alarm system
- Dishwasher
- Washing/drying machine
- Light wash wood effect flooring
- Modern, white kitchen units

Location

